

Flexible Unit type FXU

Standard hydraulic power packs are a type of hydraulic power pack. They are characterised by their very flexible design and customer-specific modular adjustment options. Power packs from the FXU (FlexUnit) series are used to generate pressure for stationary oil-hydraulic systems.

The power packs are equipped with aluminium or steel oil tanks. The pump is located in the tank. One pump or a pump combination is possible.

Radial piston pumps or external gear pumps are both used, as well as combinations of external gear pumps with radial piston pumps.

The pumps are installed under a top housing cover in an aluminium or steel tank.

Features and benefits:

- Hydraulic power pack for continuous operation (S1 operation)
- Long lifetime and excellent reliability when using radial piston pumps
- Low noise production when using gear pumps
- Combinations of radial piston pumps and gear pumps available for dual-stage systems
- Quick to configure due to tailored modular system
- Customer-specific documentation with EPlan Fluid schematic, step model and adjusted data sheet
- Possible to directly mount all HAWE valve banks

Intended applications:

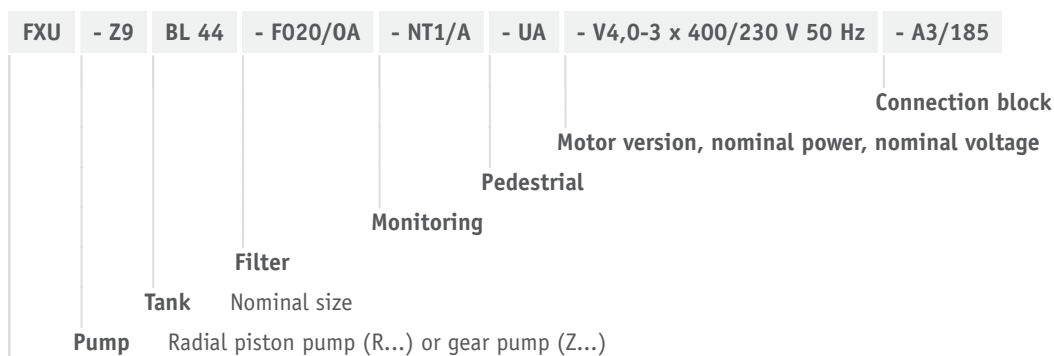
- Machine tools with a continuous flow rate requirement
- Recycling systems
- Plastics machinery
- Unloading stations in material handling
- Pressing applications such as vulcanising and briquetting
- Incremental launching systems for bridge building



Standard Hydraulic Unit Model FXU

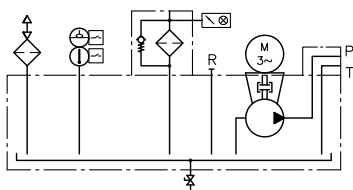
Nomenclature:	Standard hydraulic power pack (S1 operation) Single-circuit pump, dual-circuit pump With radial piston pump and/or gear pump in the tank
Version:	Radial piston pump and/or gear pump
p_{max}:	High pressure: 700 bar Low pressure: 280 bar
Q_{max}:	High pressure: 64 l/min Low pressure: 80 lpm Radial piston pump: V _g = 64.2 cm ³ /rev Gear pump: V _g = 63 cm ³ /rev
V_{Tank max}:	560 l

Design and order coding example

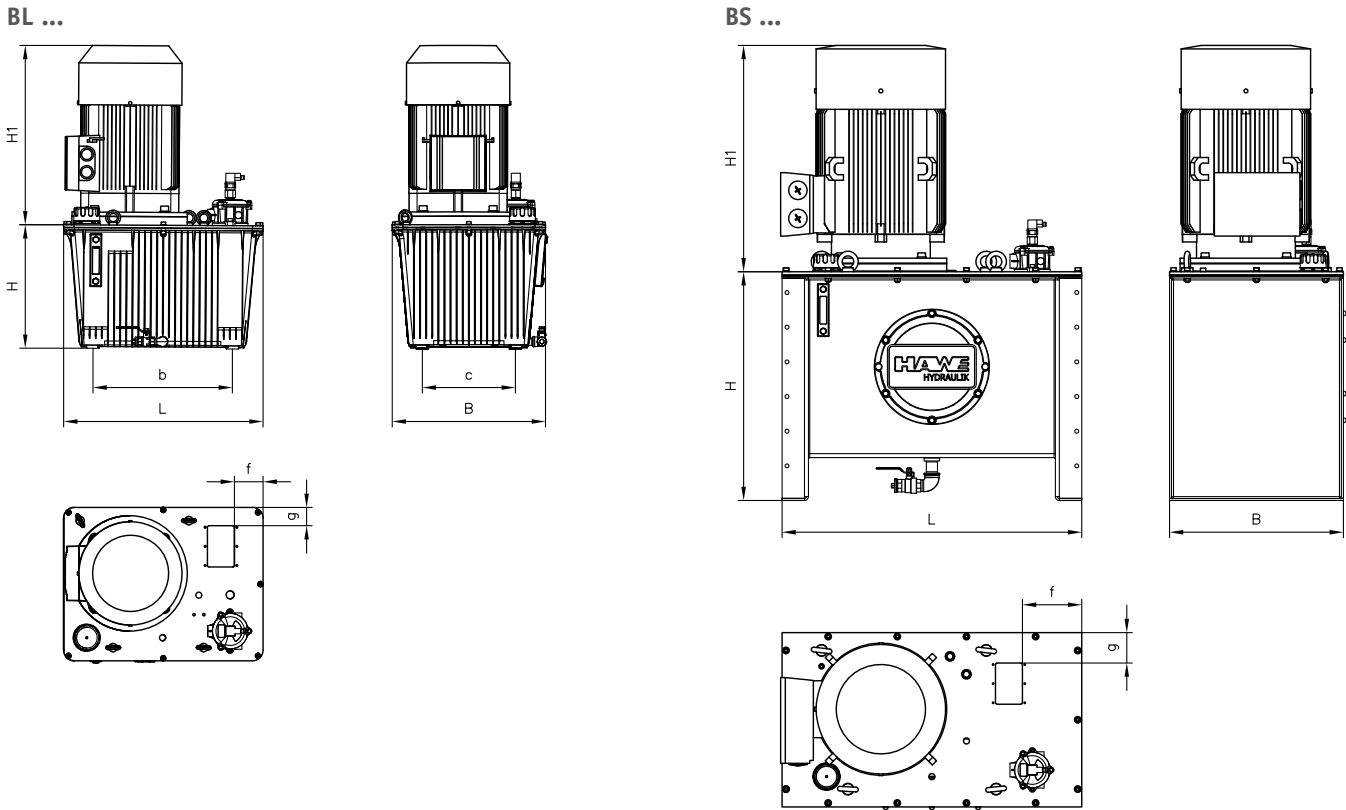


Basic type

Function



General parameters and dimensions



Aluminium tank

Coding	H	L	B	b	c	f	g
BL 30	291	490	350	326	176	31	19
BL 44	324	515	425	341	241	36	24
BL 70	374	605	475	422.5	282.5	73	49

Steel tank

Coding	H	L	B	f	g
BS 100	693	670	528	140	66
BS 160	693	910	528	166	86
BS 260	693	1310	528	566	86
BS 400	765	1270	904	474	260

Associated technical data sheets:

- [Standard Hydraulic Unit Model FXU: D 6020](#)
- [Radial piston pump type R and RG: D 6010](#)
- [Dual-stage pump type RZ: D 6910](#)

Suitable connection blocks

- [Connection blocks type A for hydraulic power packs: D 6905 A/1](#)
- [Connection blocks type B for hydraulic power packs: D 6905 B](#)
- [Connection block type C 5 and C 6: D 6905 C](#)

Flange-mountable valve banks

- [Valve bank \(nominal size 6\) type BA: D 7788](#)
- [Valve assembly Model BNG: D 7788 BNG](#)
- [Valve bank \(directional seated valve\) type BVH: D 7788 BV](#)
- [Valve bank \(directional seated valve\) type VB: D 7302](#)
- [Valve bank \(directional seated valve\) type BWN and BWH: D 7470 B/1](#)